

CATALOGUE

DENTAL IMPLANTOLOGY



Torque Wrench



Torque Wrench

HD-90-400

A universal torque wrench that can fit both square and hex implant drivers. For precise tightening of implant prosthetic. Achieves consistent pre-loading of implant abutments and clutch releases when calibrated torque is reached.



Torque Wrench

HD-90-401

A universal torque wrench that can fit both square and hex implant drivers. For precise tightening of implant prosthetic. Achieves consistent pre-loading of implant abutments and clutch releases when calibrated torque is reached.



Torque Wrench

HD-90-402

A universal torque wrench that can fit both square and hex implant drivers. For precise tightening of implant prosthetic. Achieves consistent pre-loading of implant abutments and clutch releases when calibrated torque is reached.



Torque Wrench

HD-90-403

A universal torque wrench that can fit both square and hex implant drivers. For precise tightening of implant prosthetic. Achieves consistent pre-loading of implant abutments and clutch releases when calibrated torque is reached.



Torque Wrench

HD-90-404

A universal torque wrench that can fit both square and hex implant drivers. For precise tightening of implant prosthetic. Achieves consistent pre-loading of implant abutments and clutch releases when calibrated torque is reached.



Square Ratchet Wrench

HD-90-405

The hex ratchet is designed to fit on our implant drivers and prosthetic drivers. There is no defined torque setting with this style of wrench.

Torque Wrench



Hex Ratchet Wrench

HD-90-406

The hex ratchet is designed to fit on our implant drivers and prosthetic drivers. There is no defined torque setting with this style of wrench.



Torque Wrench

HD-90-407

Adjustable & Easy To Use For Precisely Tightened Implant Prosthetic Achieves Consistent Pre-Loading Of Implant Abutments Clutch Releases When Calibrated Torque Is Reached.



Torque Wrench With Scale

HD-90-408

Torque Wrench With Scale 15 Ncm to 80 Ncm.



Torque Wrench

HD-90-409

Torque Wrench with a progressive installation of torque until max. 30 Ncm.



Implat Driver

HD-90-430

.035 Hex/ .076 Shaft, Short (6.4mm).



Implat Driver

HD-90-431

.035 Hex/ .076 Shaft, Short (6.4mm), Tapered.



Implat Driver

HD-90-432

.035 Hex/ .076 Shaft, Long (12.7mm).



Implat Driver

HD-90-433

.035 Hex/ .076 Shaft, Long (12.7mm), Tapered.



Implat Driver

HD-90-434

.040 Hex, Short (6.4mm), Tapered.



Implat Driver

HD-90-435

.040 Hex, Long (12.7mm), Tapered.



Implat Driver

HD-90-436

.048 Hex/ .056 Shaft, Short (6.4mm).



Implat Driver

HD-90-437

.048 Hex/ .056 Shaft, Tapered, Short (6.4mm).



Implat Driver

HD-90-438

.048 Hex/ .056 Shaft, Long (12.7mm).



Implat Driver

HD-90-439

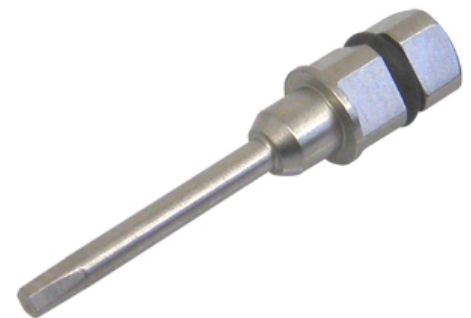
.048 Hex/ .056 Shaft, Tapered, Long (12.7mm).



Implat Driver

HD-90-440

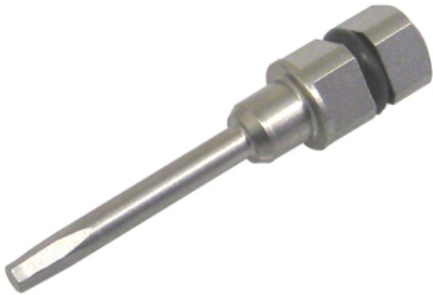
.052 Hex Driver Tapered, Short (6.4mm).



Implat Driver

HD-90-441

.052 Hex Driver Tapered, Long (12.7mm).



Implat Driver

HD-90-442

.050 Hex/ .056 Shaft, Tapered, Short (6.4mm).



Implat Driver

HD-90-443

.050 Hex/ .056 Shaft, Tapered, Long (12.7mm).



Implat Driver

HD-90-444

.062 Hex/ .076 Shaft, Short (6.4mm).



Implat Driver

HD-90-445

.062 Hex/ .076 Shaft, Long (12.7mm).



Implat Driver

HD-90-446

.070 Hex/ .090 Shaft, Long (12.7mm).



Implat Driver

HD-90-447

.080 Hex/ .090 Shaft, Short (6.4mm).



Implat Driver

HD-90-448

.080 Hex/ .090 Shaft, Long (12.7mm).



Implat Driver

HD-90-449

.050 Square Driver, Short (6.4mm).



Implat Driver

HD-90-450

.050 Square Driver, Long (12.7mm).



Implat Driver

HD-90-451

.080 Female Hex Driver.



Implat Driver

HD-90-452

Torx Driver for NobelBiocare, Short (6.4mm).



Implat Driver

HD-90-453

Torx Driver for NobelBiocare, Long (12.7mm).



Implat Driver

HD-90-454

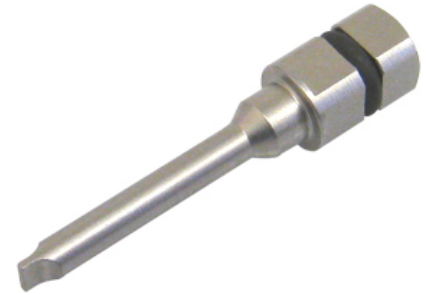
Torx Driver for ITI, Short (6.4mm).



Implat Driver

HD-90-455

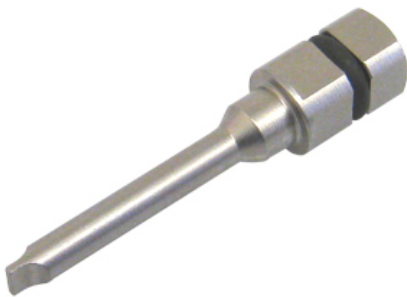
Torx Driver for ITI, Long (12.7mm).



Implat Driver

HD-90-456

.017 Blade/ .076 Shaft, Short (6.4mm).



Implat Driver

HD-90-457

.017 Blade/ .076 Shaft, Long (12.7mm).



TG Post Components Driver

HD-90-458

TG Post Components Driver.



Driver Extension

HD-90-459

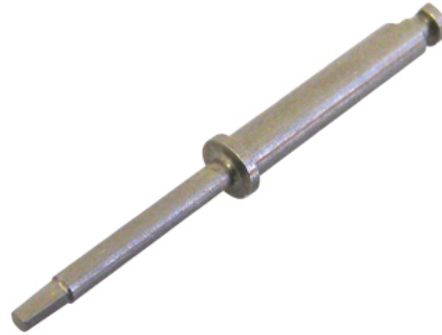
Increases driver length by 3/8"



Driver Extension

HD-90-460

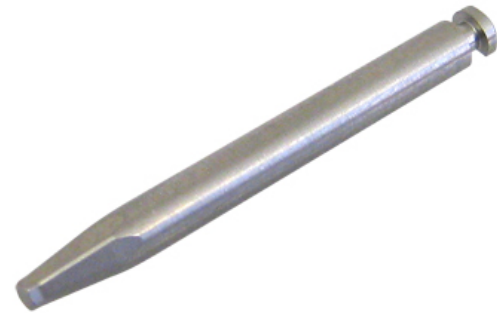
Increases driver length by 5/8".



Latch Style Tapered Hex Driver

HD-90-461

.040 Latch Style 1mm Tapered Hex Driver Overall Shaft Length .954"



Latch Style Tapered Hex Driver

HD-90-462

.048 Latch Style Tapered Hex Driver Overall Shaft Length - .954"



Latch Style Tapered Hex Driver

HD-90-463

.050 Latch Style Tapered Hex Driver.



Latch Style Square Driver

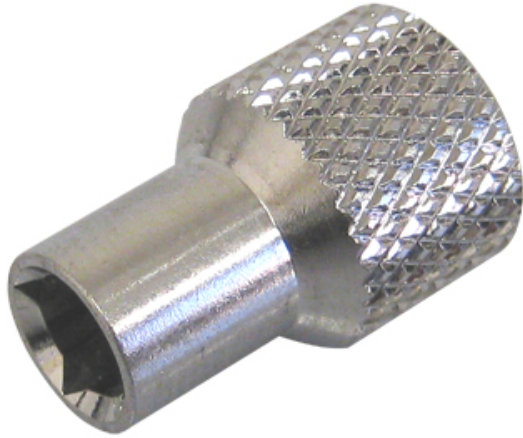
HD-90-464

.052 Latch Style Square Driver.



Individual Latch-Type Bits For Right-Angled Driver

HD-90-465



Manual Thumb Knob

HD-90-500

Used with driver for ease of insertion of the screw. Screw is tightened with finger pressure and final seating is accomplished with the torque wrench.



Torque Wrench Adaptor

HD-90-501

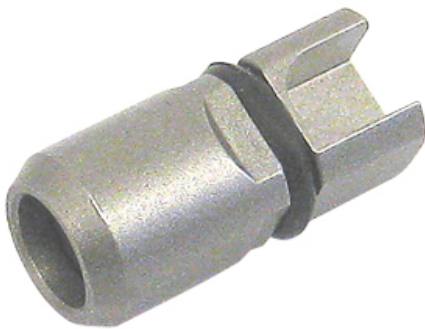
Use with Nobel Biocare torque wrench to use standard 4mm square connection drivers.



Torque Wrench Adaptor

HD-90-502

Torque wrench to use standard 4mm square connection drivers.



Latch To Square Adaptor

HD-90-503

Allows the use of latch style drivers or burs in ratchet or torque wrenches with 4mm square connections.



Internal Irrigation Pilot Drill

HD-90-530

The 2mm pilot drill is designed to a depth of 8mm.



Internal Irrigation Drill

HD-90-531

The internally irrigated twist drills are for all our implant systems. They have color coded depth markings for accurate drilling, diameters marked on each drill, polished stainless steel surface for fast, smooth cutting and sequenced drill.



Internal Irrigation Drill

HD-90-532

The internally irrigated twist drills are for all our implant systems. They have color coded depth markings for accurate drilling, diameters marked on each drill, polished stainless steel surface for fast, smooth cutting and sequenced drill.



Internal Irrigation Drill

HD-90-533

The internally irrigated twist drills are for all our implant systems. They have color coded depth markings for accurate drilling, diameters marked on each drill, polished stainless steel surface for fast, smooth cutting and sequenced drill.



Internal Irrigation Drill

HD-90-534

The internally irrigated twist drills are for all our implant systems. They have color coded depth markings for accurate drilling, diameters marked on each drill, polished stainless steel surface for fast, smooth cutting and sequenced drill.



Internal Irrigation Drill

HD-90-535

The internally irrigated twist drills are for all our implant systems. They have color coded depth markings for accurate drilling, diameters marked on each drill, polished stainless steel surface for fast, smooth cutting and sequenced drill.



Internal Irrigation Drill

HD-90-536

5.20mm x 16mm Internal Irrigation Drill

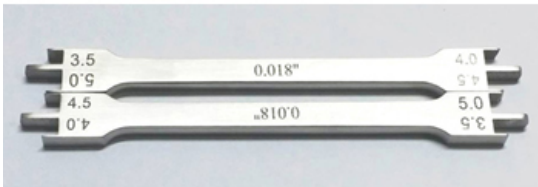


Counter Sink Drill

HD-90-537

Counter Sink Drill.

Implant Calipers



Bracket Height Gauge

HD-90-627

Bracket Height Gauge 0.018



Bracket Height Gauge

HD-90-628

Bracket Height Gauge 0.018



Special Vernier Calipers

HD-90-600

Special Vernier Calipers For Dentists Purposes
Made Of Stainless Steel. Measuring Range 80mm.



Deluxe Boley Gauge

HD-90-601

Curved tips for a clean sight line. The front and back are marked with scales; both marked in millimetres up to 80mm, with large marks and numbers to denote every 10 millimetres.



Micro Boley Gauge

HD-90-602

Micro Boley Gauge Facilitates Positioning Of Implants.
Measures Range 100mm.



Bone Caliper

HD-90-603

Implant Bone Caliper for mapping bone width
double sided. Measures range 35mm.



Ridge Mapping Caliper

HD-90-604

Implant Ridge Mapping Caliper Width 0-25mm, both side reading.



Castroviejo Caliper

HD-90-605

Castroviejo Caliper Made of stainless steel and is used to measure bone or other oral structures. Measures Range 20mm.



Castroviejo Caliper

HD-90-606

Castroviejo Caliper Angled Made of stainless steel, Measures Range 20mm.



Castroviejo Caliper

HD-90-607

Castroviejo Caliper Made of stainless steel and is used to measure bone or other oral structures. Measures Range 20mm.



Castroviejo Caliper

HD-90-608

Castroviejo Caliper Short Beak Straight Made of stainless steel and is used to measure bone or other oral structures. Measures Range 40mm.



Castroviejo Caliper

HD-90-609

Castroviejo Caliper Short Beak Angled Made of stainless steel and is used to measure bone or other oral structures. Measures Range 40mm.

Implant Calipers



Castroviejo Caliper

HD-90-610

Castroviejo Caliper Long Beak Straight Made of stainless steel and is used to measure bone or other oral structures. Measures Range 40mm.



Castroviejo Caliper

HD-90-611



Castroviejo Caliper

HD-90-612

Castroviejo Caliper Window Shape Made of stainless steel and is used to measure bone or other oral structures. Measures Range 40mm. Available in Straight and Curved.



Bracket Height Gauge

HD-90-626

Bracket Height Gauge 0.018 Set of four Pieces.



Bone Bracket Gauge

HD-90-613

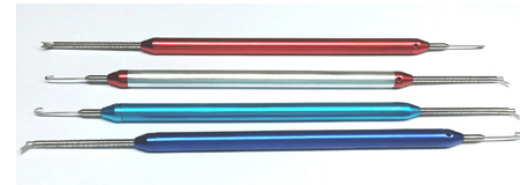
Bone Bracket Gauge 3.5 to 5.0mm use for marking.



Bracket Height Gauge .022

HD-90-614

Incorporates a precision bar to seat in arch wire slot at a 3.5, 4.0, 4.5 or 5mm distance from occlusal rest to accurately position brackets during bonding. Made of Stainless steel & aluminum available in .022 versions



Bracket Height Gauge .018

HD-90-615

Incorporates a precision bar to seat in archwire slot at a 3.5, 4.0, 4.5 or 5mm distance from occlusal rest to accurately position brackets during bonding. Made of Stainless steel & aluminum available in .018 versions.

Boley Gauge Modify

HD-90-616

Designed for accessibility and ease. Measures in millimeters. Curved and pointed beaks facilitate accurate measurements. This particular gauge also has a locking mechanism

Dontrix Gauge

HD-90-617

Highly accurate gauge for measuring the force of elastics and springs.



Boley Gauge

HD-90-618

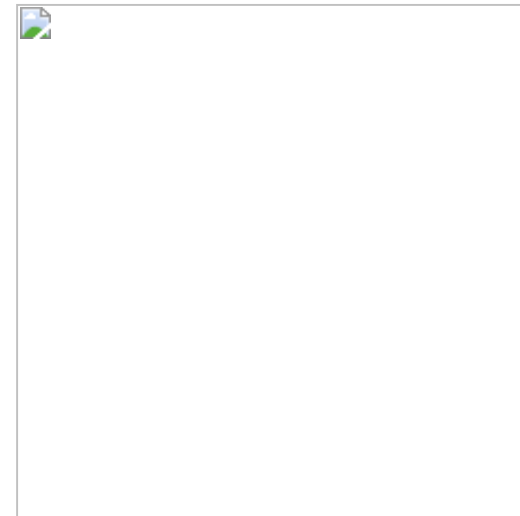
Boley Gauge is a measuring instrument calibrated in tenths of millimeters. It is used in prosthodontics for determining tooth dimensions and making other measurements. Measuring range is 10cm.



Iwanson Gauge

HD-90-619

Iwanson Caliper Metal & Wax. Measuring range 10mm.



Iwanson Gauge

HD-90-620

Iwanson Gauge For Wax With Etching Stamp. Measuring range 10mm.



Swivel Bracket Height Gauge 022

HD-90-621

This height gauge measures 3.5, 4.0, 4.5, and 5.0mm and is constructed of all stainless steel. Also, it can be fully autoclaved or dry heat sterilized. Long handle for unique left and right posterior access to upper and lower bicuspid and molar bonds.



Over Bite Ruler

HD-90-624

Over Bite Ruler Stainless Steel makes for easy measuring of overbit.



Over Bite Ruler Blue

HD-90-625

Over Bite Ruler stainless steel in blue color. This ruler makes for easy measuring of overbit.



Tissue Punch Offset

HD-90-706

Tissue Punch Offset / Angled



Tissue Punch

HD-90-705

Tissue Punch Straight



Implant Bone Crusher Set

HD-90-709

Implant Bone Crusher Set.



Bone Splitting Kit

HD-90-710

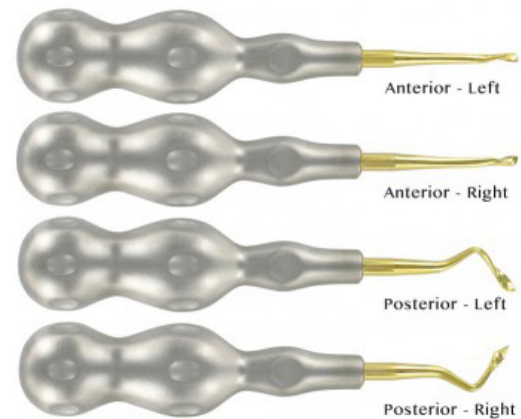
Bone Splitting Kit.



Bone Crusher

HD-90-711

Bone Cursher.



Power Twist Periosteal Set

HD-90-712

POWER TWIST PERIOTOMES 4mm SET (4Pcs).
POWER TWIST PERIOTOME 4mm ANTERIOR, TWSTR-L GOLD COATED TIP

POWER TWIST PERIOTOME 4mm ANTERIOR,
TWSTR-R GOLD COATED TIP
POWER TWIST PERIOTOME



Implant Osteotomes

HD-90-700

Set Of 6 Offset Sinus Osteotomes.



Implant Osteotomes

HD-90-701

Package Includes: Set of 5 Sinus Osteotomes-Offset Handle Set of 5 Adjustable Stops And Wrench For Conservative Placement Of Maxillary Implants Using A "Socket Lift" Procedur.



Bone Scraper

HD-90-702

Bone Scraper Curved.



Bone Scraper

HD-90-703

Bone Scraper Straight.



Bone Grafting Syringe

HD-90-704

Bone Grafting Syringe all size available.



Accu Luxating Set

HD-90-708

Accu Luxating Set.

Elevators accu lux-tome str titanium serrated

Ele



Screw Driver Self-Drilling

HD-90-713

Dental implant mini screw driver self drilling Implants screw tool will work with all kinds of self-drilling micro implants screw.



PRF Box

HD-90-714

Cassette for processing Autologous growth factors concentrates and to obtain PRF membranes, plugs and PRF Liquid for steaky bone & exudate for hydration of bone grafts and membranes. Made in in stainless steel.



Tissue Punch Set Of 7

HD-90-715

7 Pieces set of Implant Tissue Punch Stainless Steel. 4mm (Straight) 5mm (Straight) 6mm (Straight) 4mm (Offset/Curved) 5mm (Offset/Curved) 6mm (Offset/Curved) 8mm (Offset/Curved)



Dental PRF Box GRF System Platelet Rich Fibrin Set Implant Surgery Membrane Kit

HD-90-716

Dental PRF Box GRF System Platelet Rich Fibrin Set Implant Surgery Membrane Kit .



Adjustable Angled Scalpel Handle

HD-90-717

Angle of blade adjusts to easily get around corners adjustment sets blade from straight to back angled locks in at 90°, 60°, 30°, Straight, -30°, -60° Angles.Six way adjustable blade option.



Adjustable Angled Scalpel Handle

HD-90-718

Angle of blade adjusts to easily get around corners adjustment sets blade from straight to back angled locks in at 90°, 60°, 30°, Straight, -30°, -60° Angles.Six way adjustable blade option.

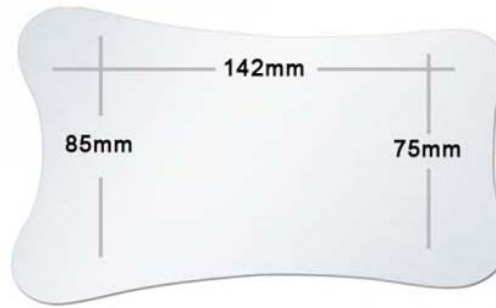
Intra-Oral Photography Mirrors



**Glass Intra-Oral Photography Mirror
Occlusal Adult**

HD-90-814

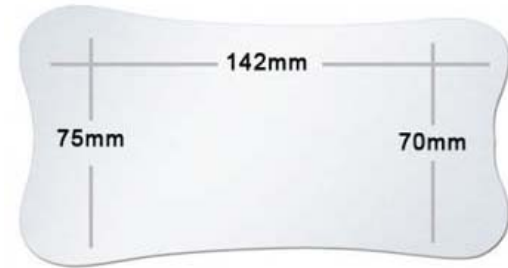
Intra-Oral Photography Glass Mirror Occlusal Adult. Rhodium-coated glass on both sides, fully autoclavable up to 350-F, cold disinfection not recommended.



**Intra-Oral Photography Mirror
Occlusal Adult XL**

HD-90-801

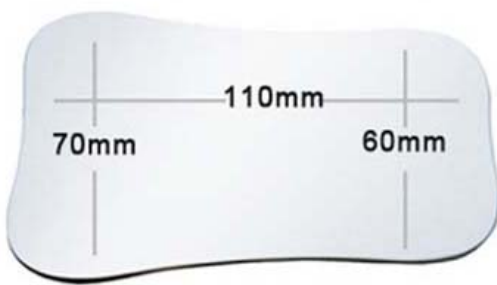
Occlusal Mirror X-Long Palatal Adult. Available in Stainless Steel in high finish.



**Intra-Oral Photography Mirror
Occlusal Adult Large**

HD-90-802

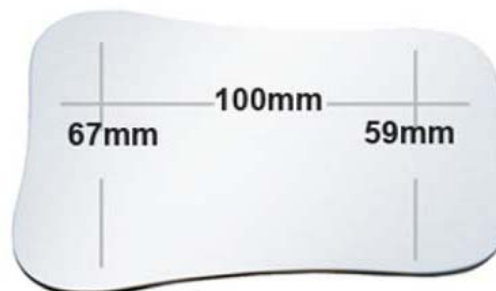
Occlusal Mirror Adult Large. Available in Stainless Steel in high finish.



**Intra-Oral Photography Mirror
Occlusal Adult**

HD-90-803

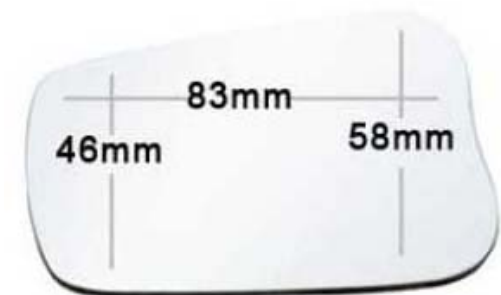
Occlusal Mirror Adult Available in Stainless Steel in high finish.



**Intra-Oral Photography Mirror
Occlusal Adult**

HD-90-804

Occlusal Mirror Adult Available in Stainless Steel in high finish.



**Intra-Oral Photography Mirror
Occlusal Child**

HD-90-805

Occlusal Mirror Child Available in Stainless Steel in high finish.

Intra-Oral Photography Mirrors



Intra-Oral Photography Mirror Occlusal Adult

HD-90-806

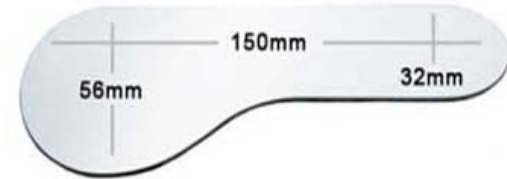
Occlusal Mirror Adult Large. Available in Stainless Steel in high finish.



Intra-Oral Glass Photography Mirror

HD-90-807

Intra-Oral Glass Photography Mirror Rhodium Coated XL Adult.



Intra-Oral Photography Mirror Buccal Child

HD-90-808

Intra-Oral Photography Mirror Buccal Child. Available in Stainless Steel in high finish.



Intra-Oral Photography Mirror Buccal Adult

HD-90-810

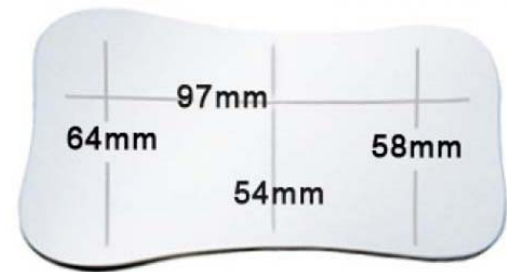
Intra-Oral Photography Mirror Buccal Adult. Available in Stainless Steel in high finish.



Intra-Oral Photography Mirror Buccal Large

HD-90-809

Intra-Oral Photography Mirror Buccal Large. Available in Stainless Steel in high finish.



Intra-Oral Photography Mirror Occlusal Adult

HD-90-811

Intra-Oral Photography Mirror Occlusal Adult. Available in Stainless Steel in high finish.

Intra-Oral Photography Mirrors



**Intra-Oral Photography Mirror
Occlusal Adult/Child**

HD-90-812

Intra-Oral Photography Mirror Occlusal Adult/Child (Small). Available in Stainless Steel in high finish Polish.



**Intra-Oral Photography Mirror
Occlusal/Buccal Adult**

HD-90-813

Intra-Oral Photography Mirror Occlusal/Buccal Adult. Available in Stainless Steel in high finish.



**Glass Intra-Oral Photography Mirror
Occlusal**

HD-90-816

Intra-Oral Photography Glass Mirror Occlusal Child. Rhodium-coated glass on both sides, fully autoclavable up to 350-F, cold disinfection not recommended.



**Glass Intra-Oral Photography Mirror
Occlusal**

HD-90-817

Intra-Oral Photography Glass Mirror Occlusal Adult. Rhodium-coated glass on both sides, fully autoclavable up to 350-F, cold disinfection not recommended.



**Glass Intra-Oral Photography Mirror
Lingual**

HD-90-818

Intra-Oral Photography Glass Mirror Lingual Wide. Rhodium-coated glass on both sides, fully autoclavable up to 350-F, cold disinfection not recommended.



**Glass Intra-Oral Photography Mirror
Lingual**

HD-90-819

Intra-Oral Photography Glass Mirror Lingual Narrow. Rhodium-coated glass on both sides, fully autoclavable up to 350-F, cold disinfection not recommended.

Intra-Oral Photography Mirrors



Glass Intra-Oral Photography Mirror Buccal

HD-90-820

Intra-Oral Photography Glass Mirror Buccal Wide. Rhodium-coated glass on both sides, fully autoclavable up to 350-F, cold disinfection not recommended.



Glass Intra-Oral Photography Mirror Buccal

HD-90-821

Intra-Oral Photography Glass Mirror Buccal Narrow. Rhodium-coated glass on both sides, fully autoclavable up to 350-F, cold disinfection not recommended.



Intra-Oral Photography Mirror

HD-90-822

Photographic mirror stainless steel Lingual upper / Lingual lower



Intra-Oral Photographic Mirror Stainless Steel

HD-90-823

Intra-Oral Photographic Mirror stainless steel Buccal



Intra-Oral Photographic Mirror Stainless Steel

HD-90-824

Intra-Oral Photographic Mirror Stainless Steel Buccal adult / Buccal child



Intra-Oral Photographic Mirror Stainless Steel

HD-90-825

Intra-Oral Photographic Mirror Stainless Steel Child/Buccal

Intra-Oral Photography Mirrors



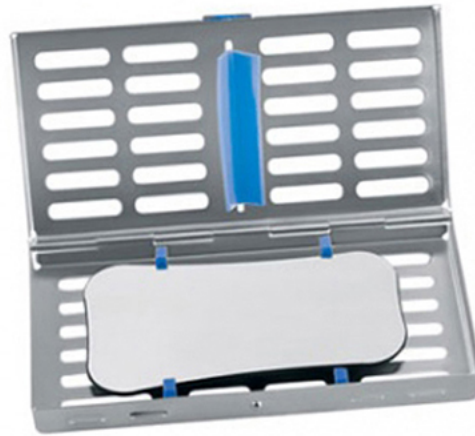
Intra-Oral Photographic Mirror Stainless Steel

HD-90-826

Intra-Oral Photographic Mirror Stainless Steel

Adult/Child

185mmx73mmx66mm



Sterilization Cassette

HD-90-827

Sterilization Cassette For Photography Mirrors



Sterilization Cassette Photo Mirrors

HD-90-828

Sterilization Cassette For 4 Photography Mirrors.



Mirror Handle Replacement Parts

HD-90-830

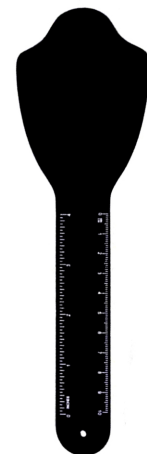
Mirror Handle Replacement Parts screw, spring and pads.



Handle For Photography Mirror

HD-90-829

Designed for use with glass photography mirrors. Adjustable jaw for secure hold with silicon tips. Autoclavable.



PHOTOGRAPHY CONTRASTORS PALATAL/ANTERIOR

HD-90-831

Photography Contrastors palatal/anterior made in aluminium with black anodised plated. Autoclave 134°C.

We do not recommend for chemical or cold sterilisation. Size are 7cm x 27cm.

Intra-Oral Photography Mirrors



PHOTOGRAPHY CONTRASTORS PALATAL/ANTERIOR

HD-90-832

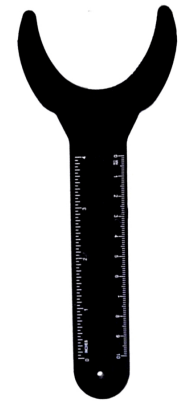
Photography Contrastors palatal/anterior made in aluminium with black anodized plated. Autoclave 1



PHOTOGRAPHY CONTRASTORS OCCLUSAL

HD-90-833

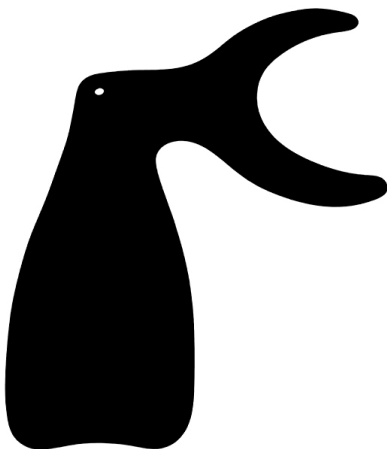
Photography Contrastors occlusal small made in aluminium with black anodized plated. Autoclave 134°C



PHOTOGRAPHY CONTRASTORS OCCLUSAL

HD-90-834

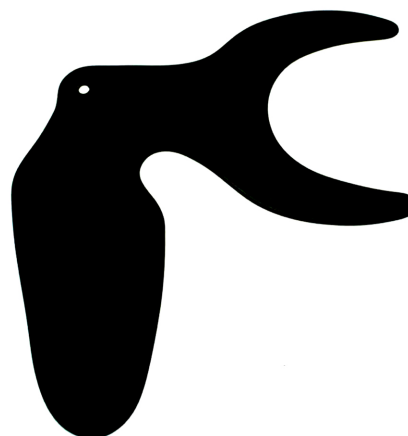
Photography Contrastors occlusal large made in aluminium with black anodized plated. Autoclave 134°C
We do not recommend for chemical or cold sterilization. Size are 6cm x 19.5cm.



PHOTOGRAPHY CONTRASTORS OCCLUSAL/BUCCAL

HD-90-835

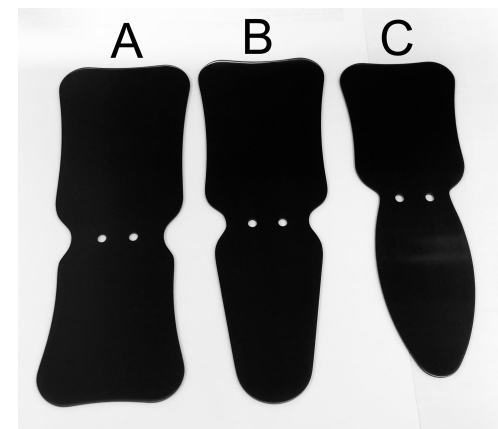
Photography Contrastors occlusal/buccal made in aluminium with black anodized plated. Autoclave 134°C



PHOTOGRAPHY CONTRASTORS OCCLUSAL/BUCCAL

HD-90-836

Photography Contrastors occlusal/buccal made in aluminium with black anodized plated. Autoclave 134°C



Photography Contrastors Stainless Steel

HD-90-837

Photography Contrastors Stainless Steel Black Titanium Coated. Each contrastors description and size are below.
A: Photography Contrastors Adult/Child, 185mm x 73mm x 66mm
B: Photography Contr

Cheek Retractors



Minnesota Retractor

HD-90-866



Wire Cheek Retractor

HD-90-867

Stainless Steel Wire Cheek Retractor Single End Square. Autoclavable



Cheek Retractor Black Double Ended

HD-90-868

Cheek Retractors Black Double Ended Stainless Steel.



Cheek Retractor

HD-90-856

Wire Cheek Retractor Single Ended Stainless Steel Autoclavable.



Cheek Retractor

HD-90-850

Cheek Retractor Double Ended Stainless Steel (autoclavable)



Cheek Retractor

HD-90-851

Cheek Retractor Single Ended Stainless Steel Autoclavable.



Wire Cheek Retractor

HD-90-852

Wire Cheek Retractor double end square sided made of stainless steel wire can be used both sides.



Self Cheek Retractor

HD-90-853

Self Cheek Retractor set of 3 Pcs stainless steel autoclaveable. Sizes are Small, Medium, Large.



Lip Cheek Retractor

HD-90-854

Lip Cheek Retractor With Stainless steel Wire Autoclave-able.



Cheek Retractor

HD-90-855

Wire Cheek Retractor Single Ended Stainless Steel Autoclavable.



Plastic Cheek Retractors

HD-90-857

Child Double ended plastic cheek retractor autoclave able. Size are 145x30x40mm



Lip Retractor

HD-90-858

Lip Retractor Double End 25Mm And 36Mm Wide Wire Formed



Columbia Cheek Retractor

HD-90-859

Wire Cheek Retractor double ended one side round and one side square made of stainless steel wire can be used both sides.



Plastic Cheek Retractors

HD-90-860

Plastic Cheek Retractor Adult double-ended allows the patient to hold the retractor, making photos much more comfortable. Size are 167x35x45mm



Tongue Depressor Adult

HD-90-861

Tongue Depressor Adult.



Wire Cheek Retractor

HD-90-862

Wire Cheek Retractor. Both sides square.



Tongue Depressors

HD-90-863

Wider Tongue Depressors



Wire Cheek Retractor

HD-90-864

Wire Cheek Retractor Stainless Steel Wire Autoclavable.



Minnesota Tongue Depressor

HD-90-865

UNIVERSITY OF MINNESOTA-Type Cheek Retractor/Tongue Depressor



Metal V Shape Cheek Retractor

HD-90-869

Metal V Shape Cheek Retractor. One side 35mm other side 40mm and total length 170mm.



Photo Lip Retractor Child

HD-90-870

Photo Lip Retractor Child Stainless Steel.



Photo Lip Retractor Adult

HD-90-871

Photo Lip Retractor Adult Stainless Steel.



Lip Retractor Child Plus Contrastor

HD-90-872

Lip Retractor Child Plus Contrastor. This Retractor is a dual action for the photography. Black titanium coated stainless steel and autoclaveable.



LIP RETRACTOR ADULT PLUS CONTRASTOR

HD-90-873

Lip Retractor Adult Plus Contrastor. This Retractor is a dual action for the photography. Black titanium coated stainless steel and autoclaveable.



Black Metal V Shape Cheek Reracktor

HD-90-874

Metal V Shape Cheek Reracktor Black Titanium Coated. One side 35mm & other side 40mm and total length is 170mm.

Sterilization Cassette



Sterilization Cassette

HD-90-911

Sterilization Cassette Stainless Steel.



Sterilization Cassette

HD-90-909

Sterilization Cassette Stainless Steel.



Sterilization Cassette

HD-90-910

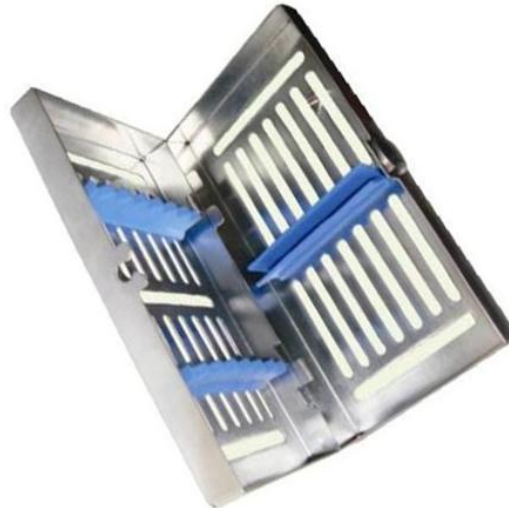
Sterilization Cassette Stainless Steel.



Sterilization Cassette

HD-90-901

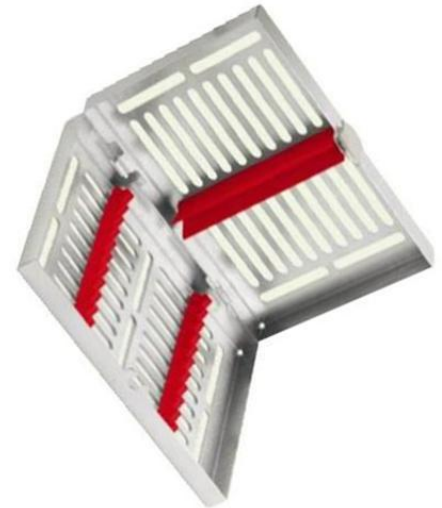
Sterilization Cassette For 5 Pcs Detachable lids With Silicone Inserts.



Sterilization Cassette

HD-90-902

Sterilization Cassette For 7 instruments with Detachable Lids Silicone Inserts.



Sterilization Cassette

HD-90-903

Sterilization Cassette with Detachable Lids.Silicone Inserts.For 10 instruments.

Sterilization Cassette



Sterilization Cassette

HD-90-904

Sterilization Cassette with Detachable Lids. Silicone Inserts. For 20 instruments.



Sterilization Cassette

HD-90-905

Sterilization Cassette. Fixed Lids, Click Lock. Silicone inserts. For 5 Instruments.



Sterilization Cassette

HD-90-906

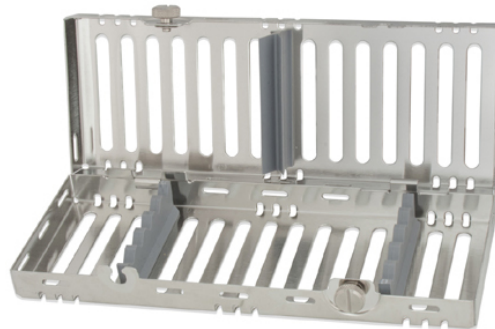
Sterilization Cassette. Fixed Lids, Click Lock. Silicone inserts. For 7 Instruments.



Sterilization Cassette

HD-90-907

Sterilization Cassette. Fixed Lids, Click Lock. Silicone inserts. For 10 Instruments.



Sterilization Cassette

HD-90-908

Sterilization Cassette Stainless Steel.



Bur Holder

HD-90-7012

Stainless Steel Bur Holder for 6,8,12,16 burs.



Short Trephines Kit

HD-90-7011

Set OF 6 Short Trephines With Bur Block. Depths Marked At 2, 4, 6, 8 & 10mm



File Holder Kit

HD-90-7010

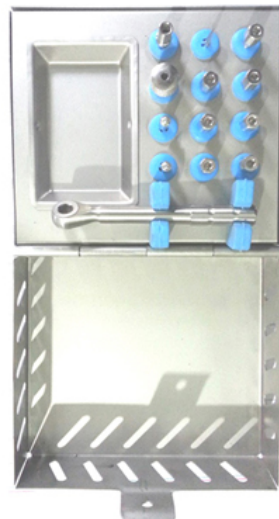
File Holder Kit.



Bone Expander Kit

HD-90-7009

Dental Implant Bone Expander Kit.



Bone Compression Kit

HD-90-7008

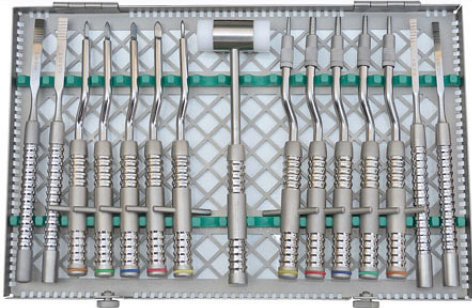
Dental Implant Bone Compression Kit.



Basic Implant Kit

HD-90-7006

The complete set of 27 essential instruments for basic implant surgery. This set comprises following instruments. Minnesota cheek retractor / Scalpel handle flat with scale / Scalpel handel round, straight / Ochsenbein chisel OCH2 / Periosteal elevator Seldin / Periosteal elevator Prichard / Perios



Implant Tool Kit

HD-90-7007

Kit of 15 instruments with sterilization cassette.
Set of 5 osteotomes with stopper, concave
Set of 5 bone spreaders
Set of 4 ridge splitting chisels
Mallet



Tissue Punches For Latch Type Handpieces

HD-90-7013

Rotary Tissue Punches For Latch Type Handpieces. Contains 3.0,4.0,5.0,6.0,7.0mm Punches.



Bur Holder

HD-90-7014

Bur Holder for 15 burs. Available in 4,8,12,15,20 any color.



Implant Surgery Kit

HD-90-7005

720-87 Curette - 707-23D1 Double-ended Explorer Probe - 720-112 Bone File - MPI-1 Membrane Placement Instrument - M0-10 Surgical Curette - MIR-08 Periosteal Raspatory - 718-PR3 Periosteal Elevator - 718-M9 Periosteal Elevator - GA-60 Implant Depth Gauge - BS-61 Tray for 20 instruments - P-96 Hemosta



Diamond Disc Safety Guard

HD-90-7015

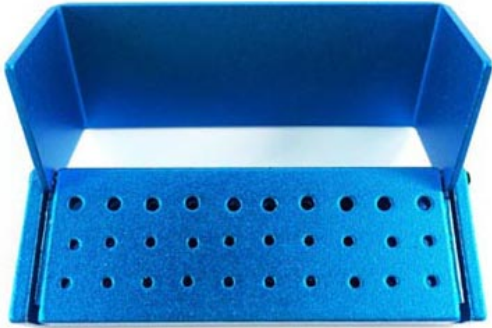
Get peace of mind with this invaluable tool by providing the safest possible working environment for your patients. Crafted from stainless steel, the Diamond Disc Guard protects the mouth from spinning Diamond Discs.



Trephines Kit

HD-90-7018

Set Of 10 Short Trephines With Bur Block. Depths Marked At 2, 4, 6, 8 & 10mm



Dental Burs Holder

HD-90-7016

Dental Burs Holder Aluminum for 30 burs. Autoclavable and available in any colors.



Dental Burs Holder

HD-90-7017

Dental Burs Holder Aluminum for 15 burs. Autoclavable and available in any colors



Trephines Kit

HD-90-7019

Set Of 5 Short Trephines Kit S.S For Burs, Drills and Short Terphines. Depths Marked At 2, 4, 6, 8 & 10mm.



Implant Fast Kit

HD-90-7020

Implant kit: includes medium sterilizing cassette, TC Iris Scissors Curved TC, Minnesota Lip and Cheek Retractor, Mayo Hegar Needle Holder TC, Lucas Bone Curette #85,

Interproximal Reduction (IPR)



Interproximal Reduction Gauges

HD-1032

Stainless steel gauges for measuring Interproximal Reduction. A set consists of the following thickness: 0.10mm, 0.20mm, 0.25mm, 0.30mm, 0.40mm and 0.50mm also 0.15mm is available on customer requirement. These gauges are



Interproximal Reduction Gauges

HD-1033

Stainless steel gauges for measuring Interproximal Reduction. A set consists of the following thickness: 0.10mm, 0.20mm, 0.25mm, 0.30mm, 0.40mm and 0.50mm also 0.15mm is available on customer requirement. These gauges are



Diamond Disc Safety Guard

HD-1034

Get peace of mind with this invaluable tool by providing the safest possible working environment for your patients. The Diamond Disc Guard protects the mouth from spinning Diamond Discs. Sizes are below.



Enamel Stripping Holder

HD-1035

Manual operation means more control and increased safety. The stainless steel enamel stripping can be used up to the first molar and accepts all sizes of steel abrasive strips and many types of linen, cloth or plastic strips. Autoclaveable and sterilizable.



CONTACT US

Address: Mustafa Town,S.I.E
51310 Sialkot, Pakistan

Cell : +92-333-8774769

E-mail : info@hadidental.com

Phone : +92-52-3240111

Email : www.hadidental.com